



**1998 CENTURION CUSTOM CAB
1998 LS1 CORVETTE MOTOR**

This particular setup is used as the company's test truck. It has been promoted at numerous hot rod events as well as traveling in several Hot Rod Power Tour. Seven Years later it is still a daily driver and test vehicle.



1968 CAMARO - 502/502 S&P MULTI-PORT W/ 4L60E TRANSMISSION

Owner: Danny & Tammy Deramus - of Street & Performance, Inc. The 1968 Camaro version was used in testing the 502 Crate Motor including computer testing for performance and driveability.



1991 CAPRICE - 502 BB WITH BRODIX-1 HEADS W/COMPETITION CAM

The 1991 Caprice Test Vehicle is set-up with a Comp Full Roller Cam Kit and with a performance 4L60 Transmission and used for testing modified Big Blocks.



**1990 GMC SIERRA EXTENDED CAB
ZZ4 W/ INTERGRATOR GM TPI**

1990 SEMA Feature Vehicle, is now used as Street & Performance Test Truck for Small Block Tuned Port Development. 15 years of service, this is the truck that Mark drives home every night.

SHIPPING INFORMATION

PRICES: We reserve the right to change prices and company policies without notice. Depending on the customers method of payment, any additional costs will be charged to your MasterCard/Visa or balance due sent C.O.D..

PAYMENT: Payment MUST be made in U.S. FUNDS ONLY! Personal checks are welcome, but please allow at least (21 days) for clearance of check from bank. For prompt service, you may use MasterCard/Visa (please be sure correct account number, expiration date, and mailing address of card are included). Cash-On-Delivery (C.O.D.) orders are welcome. But, must be paid by Cashiers Check, Certified Check, or Money Order. There will be an additional charge added to each order for shipping/handling per C.O.D. package.

SALES TAX: State of Arkansas (only) residents must add 7% sales tax.

SHIPPING: Shipping charges are based on weight and destination of package. A shipping/handling fee will be added to all orders shipped. Canadian and International shipments must be pre-paid or charged to your MasterCard/Visa.

DAMAGED CLAIMS:

U.P.S.: Merchandise shipped via United Parcel Service must be kept in the original shipping carton for UPS inspection. Please contact your nearest UPS location should your shipment be damaged; they must do the inspection.

U.S.P.S.: Merchandise shipped via United States Postal Service must be kept in the original shipping carton for USPS inspection. Take the entire package of damaged goods to your local USPS. They will assist you in filing your damage claim using the proper forms. Please keep in mind when using the postal service, there is no way of tracking goods if the package should become lost.

Any claims for damaged goods, shortages or returns must be reported within (5 days) of receipt and a copy of the invoice must be provided. Contact your carrier immediately to notify the delivered goods were damaged in shipment. They will assist you in filing your damage claim using the proper forms or can instruct if different. (do not ship directly back to S&P).

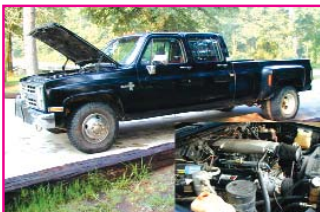
RETURN POLICY: All items returned to Street & Performance, Inc. must be accompanied with a copy of the original invoice including instructions and reason for return pertaining to how you would like the return handled. Any shipping charges incurred are NOT refundable; all returns must be shipped prepaid. There will be no C.O.D. return shipments accepted! Refunds will be made within (30 days) of receipt of the returned goods. ARTICLES MUST NOT BE DAMAGED, USED, DISFIGURED, OR MODIFIED IN ANY WAY! On merchandise returned after 15 days, we reserve the right to deduct a 15% restocking fee from the refund.

SPECIAL ORDER POLICY: Special order requests (parts that are not a stock item) may be made. Thus, they are non-returnable if the part is a non-stocked item in which may require up to full payment in advance before ordering; special order charges may apply.

BACK ORDERED ITEMS: Street & Performance, Inc. carries a large inventory of items; we do our best to keep all items in stock. Occasionally, we will be out of stock on an item. Should this occur on your order, back ordered items will be listed in the back order column noted on your invoice copy. Back ordered items are shipped within (3 weeks) or no later than (8 weeks) for custom parts from the initial order.

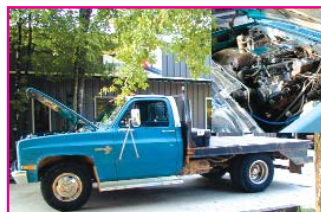
WARRANTY/DEFECTS: Street & Performance, Inc. shall not be responsible for cost of removal, installation, or incidental charges incurred as a result of parts alleged failure or inability. The company shall not be liable for any special, indirect, incidental, or consequential damages. Our responsibilities are limited to placement of defective items.

STREET & PERFORMANCE PRICES ARE SUBJECT TO CHANGE WITHOUT NOTICE!



1986 Chevrolet / Dually "For Towing"

S&P's shop trucks using the 454 BBC Motor with S&P BB Multi-Port Fuel Injection Unit.



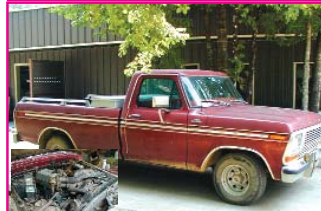
1981 Chevy 1-Ton "Hauler"

Larry Sanders, Chrome Shop Foreman of S&P, dropped in the 454 BBC Motor including the S&P BB Multi-Port Fuel Injection Unit.



1989 Chevrolet / 1500 Series

This is one of S&P's shop trucks using the 1993 LT1 Motor with 4L60 Transmission.



Judy Sanders 78 Ford Test Truck

Late Model 5.0 E.F.I. Truck Engine for testing Ford fuel injections

ORDERING INFORMATION

**For Tracking #'s or C.O.D Totals
Please Call (479) 394-9255**

RECEIVING INFORMATION

**Please Call (479) 394-2391
Phone Numbers are direct lines and will provide you with faster service.**

At Street & Performance, Inc., we do our utmost to provide the highest quality parts in the industry at a reasonable price. We are well known for our strong customer support and excellent service. If you are unable to locate parts for your particular application in this catalog, please give us a call. We specialize in the unique, and our team of professionals will be more than happy to assist you. The staff at Street & Performance, Inc. would like to extend our gratitude to each of you who order your parts from us or your authorized S&P Dealer. Watch for new products and developments on our Web Site www.hotrodlane.cc.

The Street & Performance Catalog is Designed by Street & Performance and Street & Performance Design. Digital Photography used a Ricoh RDC-2 Olympus C-2020Z, Olympus C-4000 and a Canon 20D. Typesetting, Graphics and Photography by Rick Maechler, and Dale Powell of Powell Advertising. Copyright 2005. No part of this publication may be reproduced in any fashion, without the expressed, written permission of Street & Performance Please excuse our partial Part Number format. We are in the process of assigning new part Numbers.

